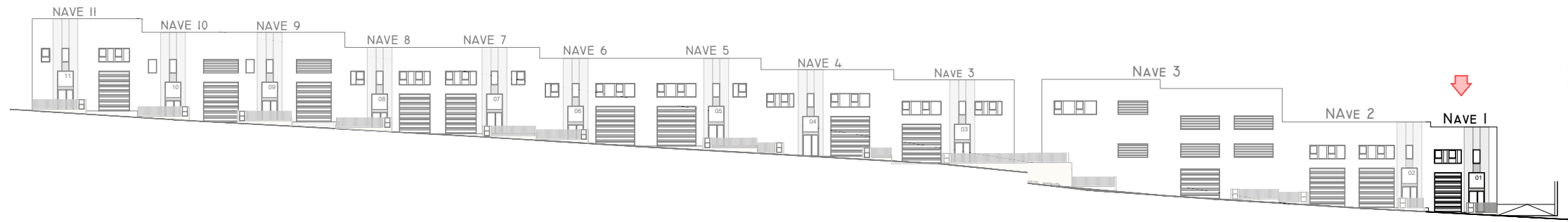




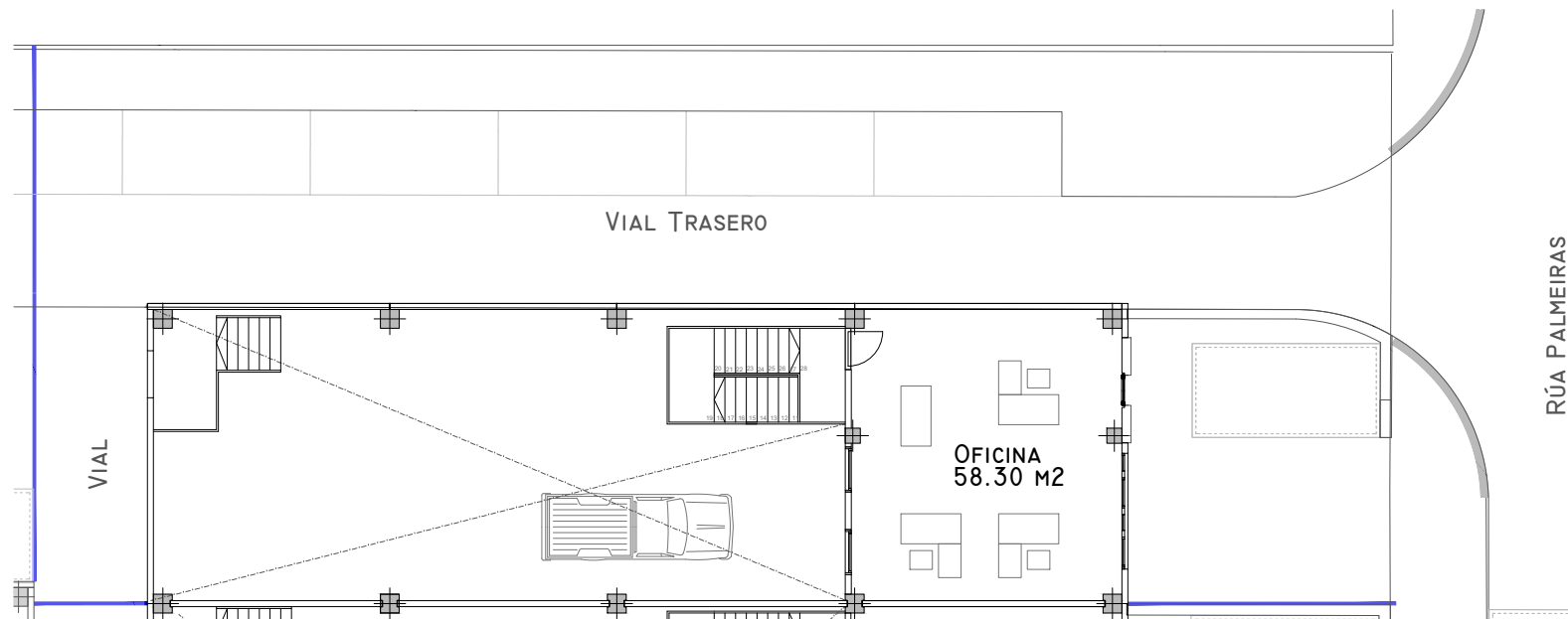
NAVE I



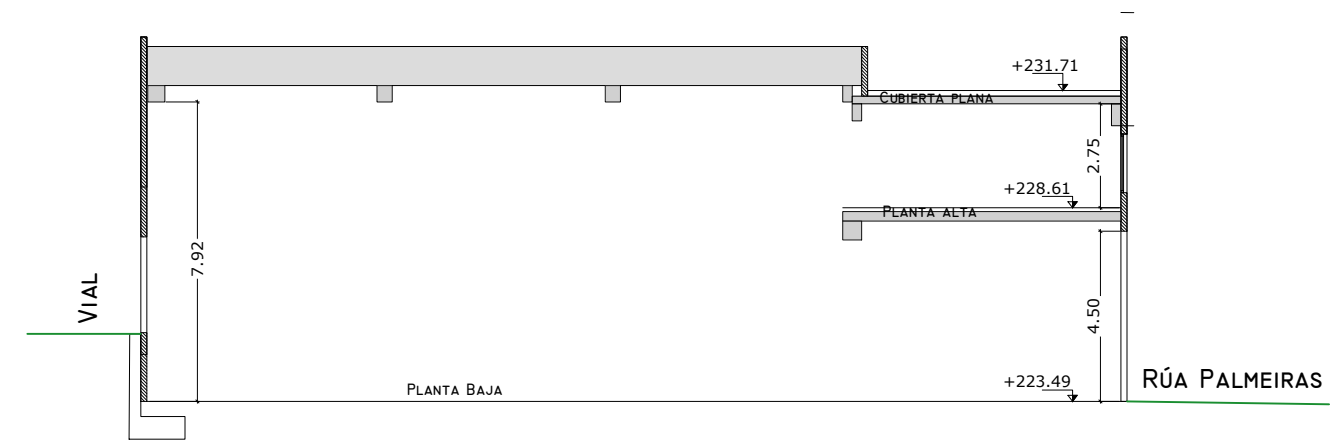
ALZADO A RÚA PALMEIRAS - E. 1:600

ALZADO A RÚA OLIVEIRAS - E. 1:600

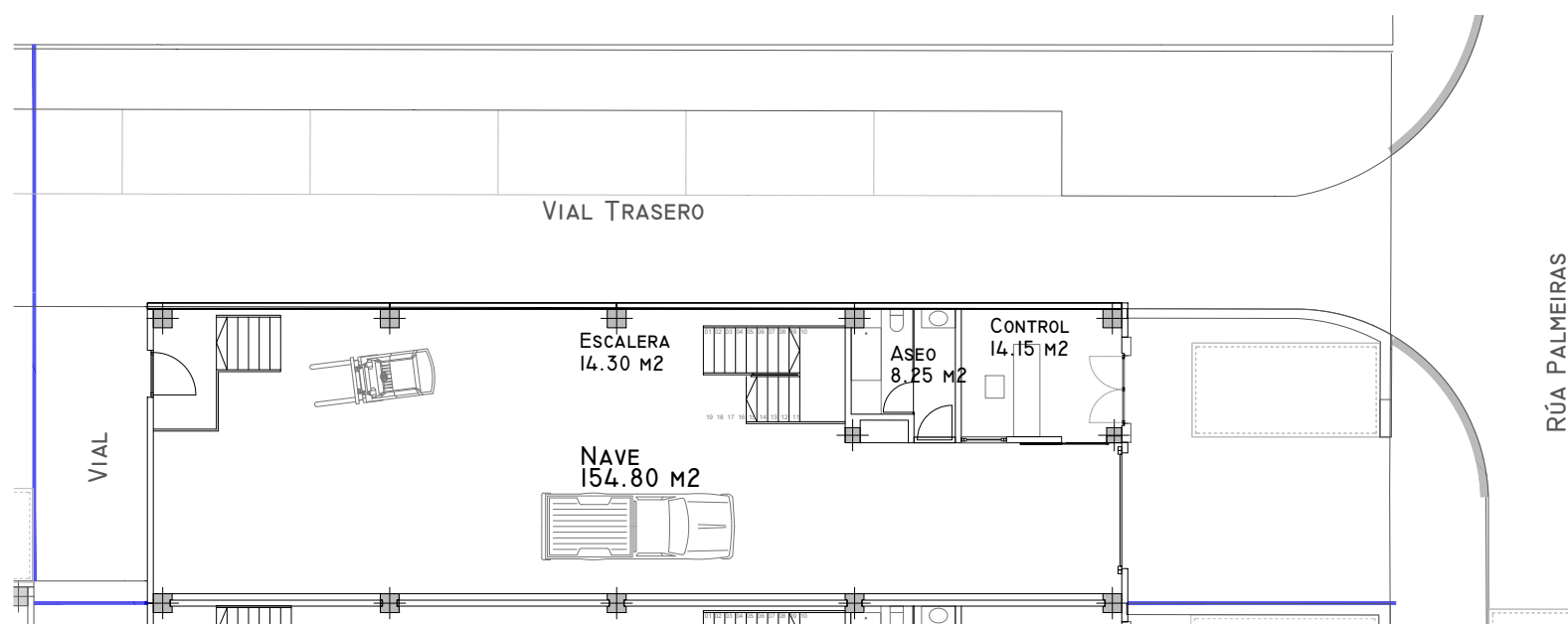
PARCELA I		
ESTANCIA	S.UTIL (M2)	S.CONSTRUIDA (M2)
P. BAJA		
CONTROL	14,15	
ASEO	8,25	
ESCALERA	14,30	
NAVE	154,80	
TOTAL P. BAJA	191,50	208,80
ENTREPLANTA		
OFICINA	58,30	
TOTAL ENTREPLANTA	58,30	63,24
TOTAL PARCELA I	249,80	272,04



PLANTA ALTA - E. 1:200



SECCIÓN - E. 1:200



PLANTA BAJA - E. 1:200