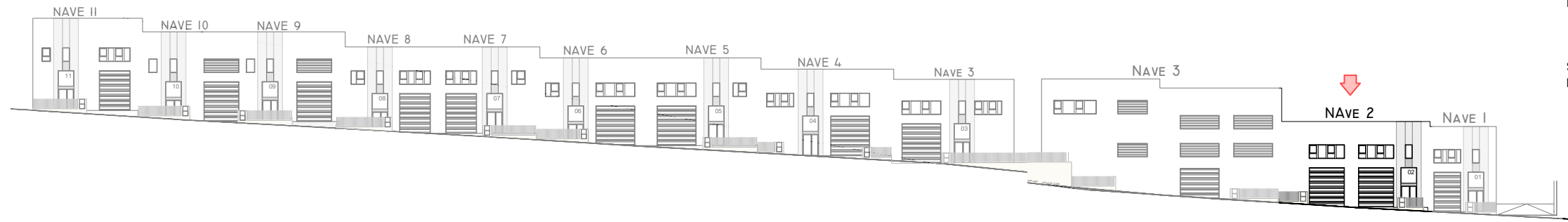


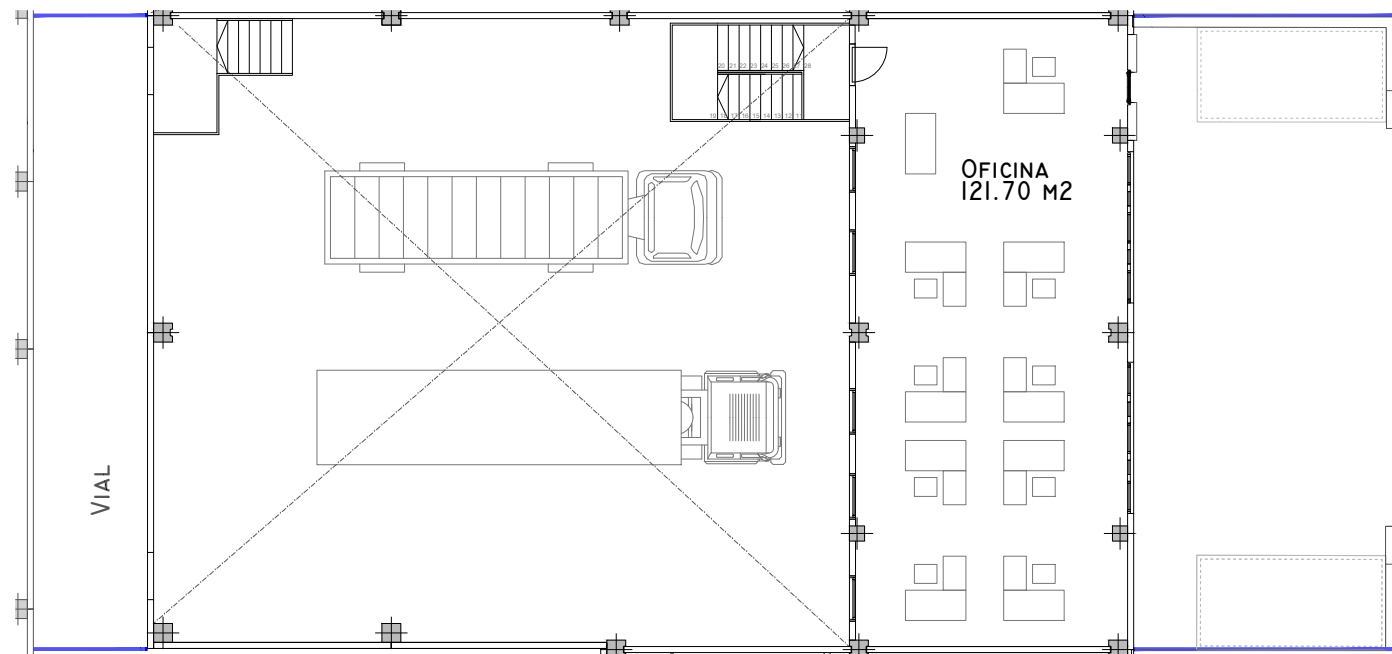
## NAVE 2



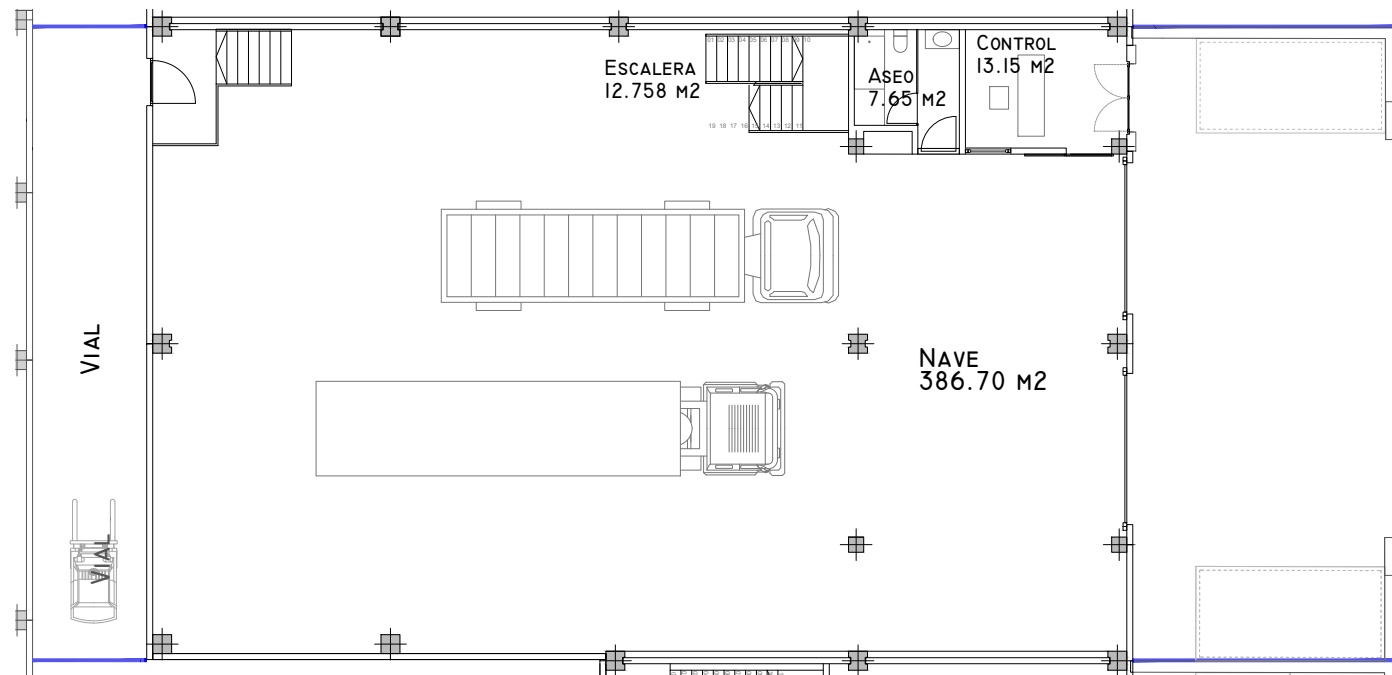
ALZADO A RÚA PALMEIRAS - E. 1:600

ALZADO A RÚA OLIVEIRAS - E. 1:600

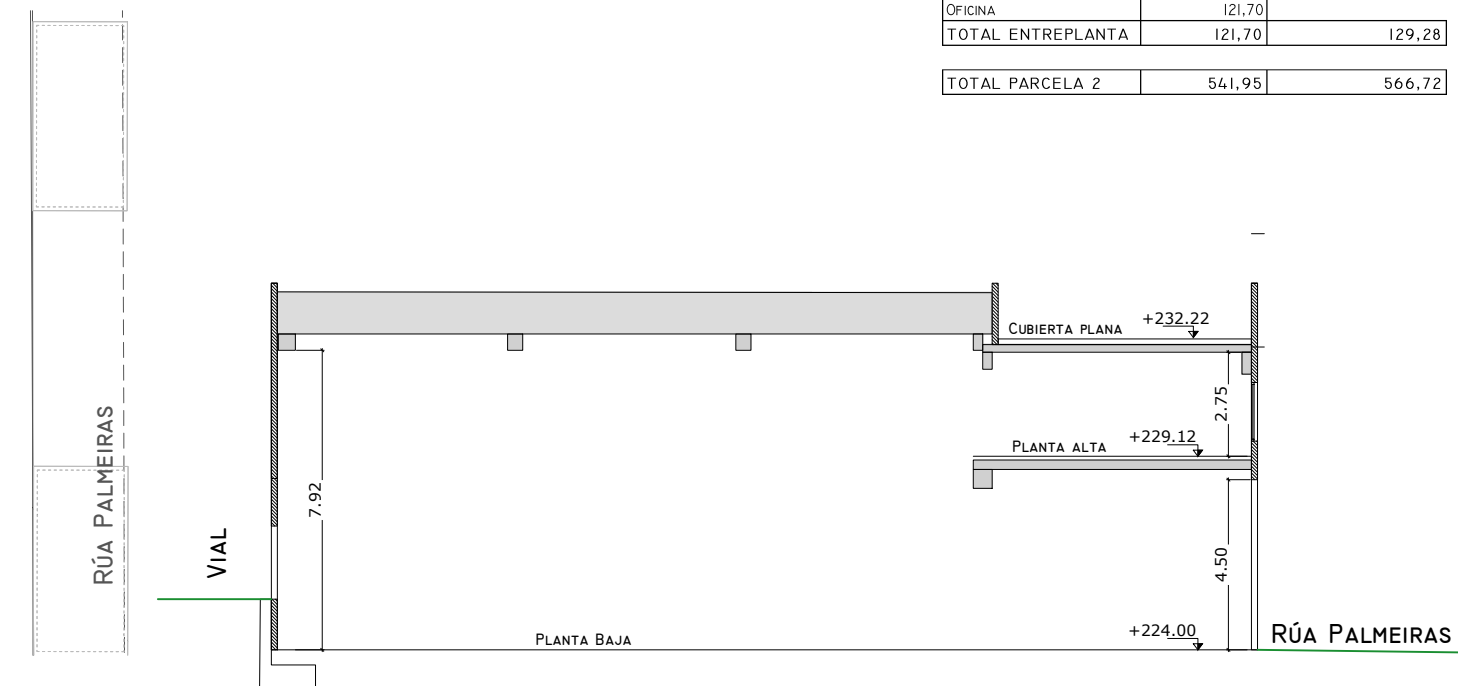
| PARCELA 2                |               |                   |
|--------------------------|---------------|-------------------|
| ESTANCIA                 | S.UTIL (M2)   | S.CONSTRUIDA (M2) |
| P. BAJA                  |               |                   |
| CONTROL                  | 13,15         |                   |
| ASEO                     | 7,65          |                   |
| ESCALERA                 | 12,75         |                   |
| NAVE                     | 386,70        |                   |
| <b>TOTAL P. BAJA</b>     | <b>420,25</b> | <b>437,44</b>     |
| ENTREPLANTA              |               |                   |
| OFICINA                  | 121,70        |                   |
| <b>TOTAL ENTREPLANTA</b> | <b>121,70</b> | <b>129,28</b>     |
| <b>TOTAL PARCELA 2</b>   | <b>541,95</b> | <b>566,72</b>     |



PLANTA ALTA - E. 1:200



PLANTA BAJA - E. 1:200



SECCIÓN - E. 1:200