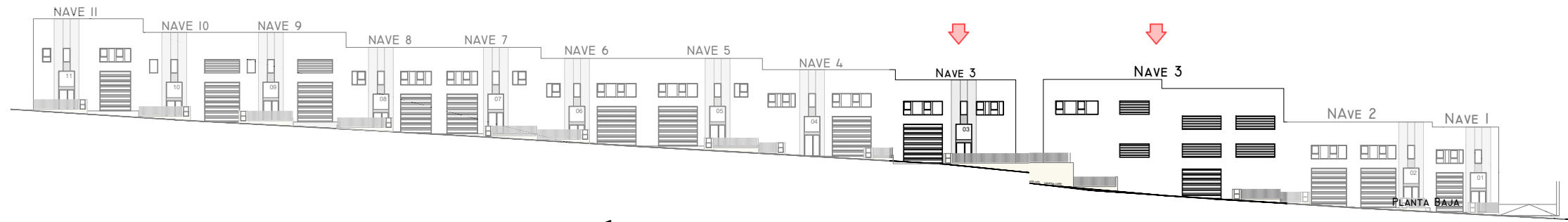




# NAVE 3



ALZADO A RÚA PALMEIRAS - E. 1:600

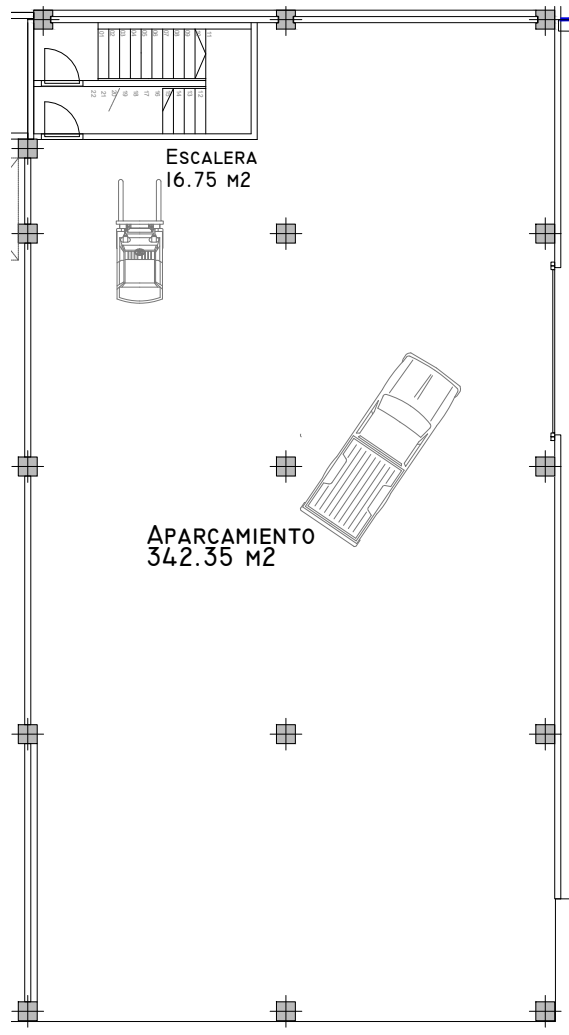
ALZADO A RÚA OLIVEIRAS - E. 1:600

PARCELA 3		
ESTANCIA	S.UTIL (M2)	S.CONSTRUIDA (M2)
SÓTANO		
APARCAMIENTO	342,35	
ESCALERA	16,75	
TOTAL SÓTANO	359,10	375,75

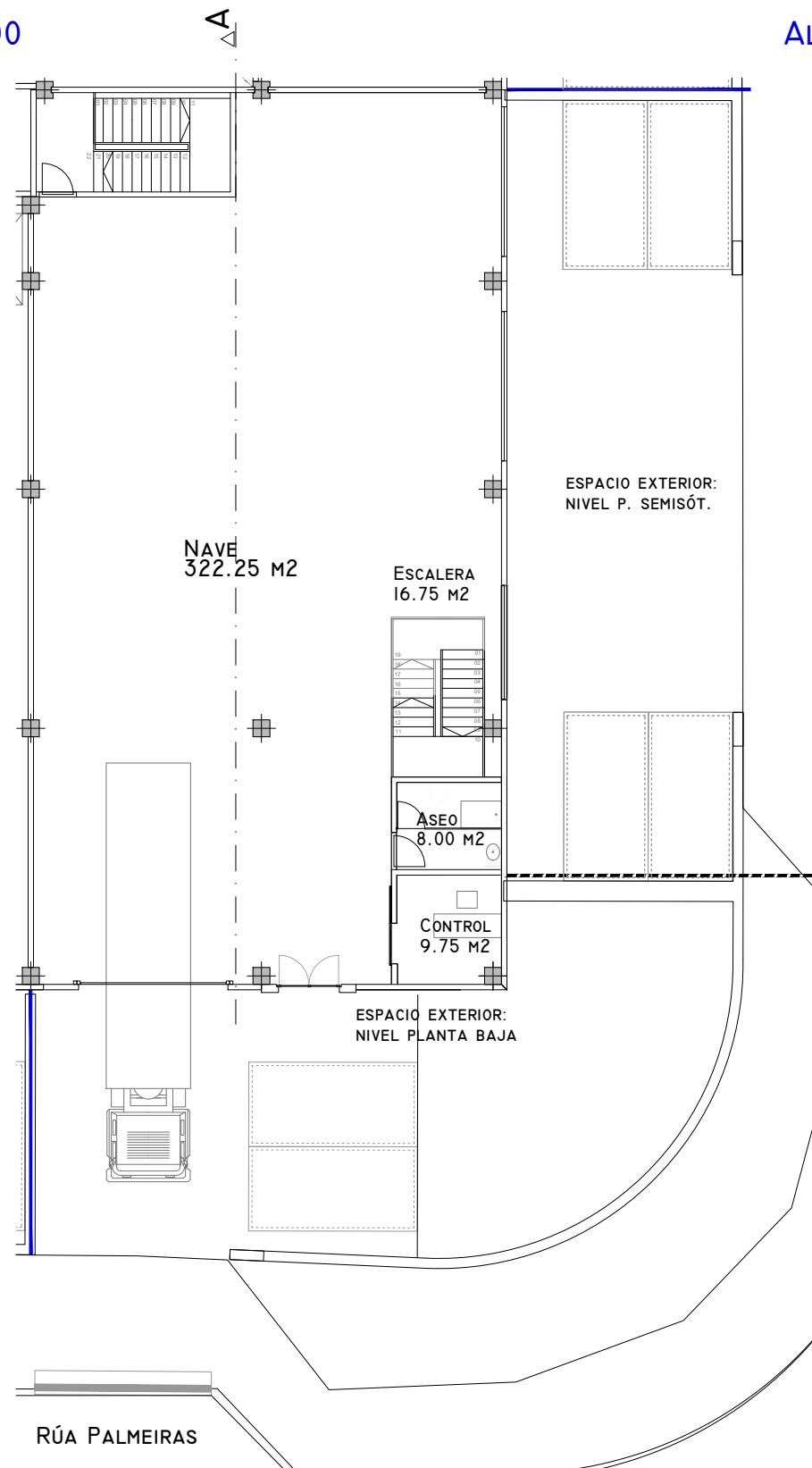
P. BAJA		
CONTROL	9,75	
ASEO	8,00	
ESCALERA	16,75	
NAVE	322,25	
TOTAL P. BAJA	356,75	375,75

ENTREPLANTA		
OFICINA	82,30	
TOTAL ENTREPLANTA	82,30	88,83

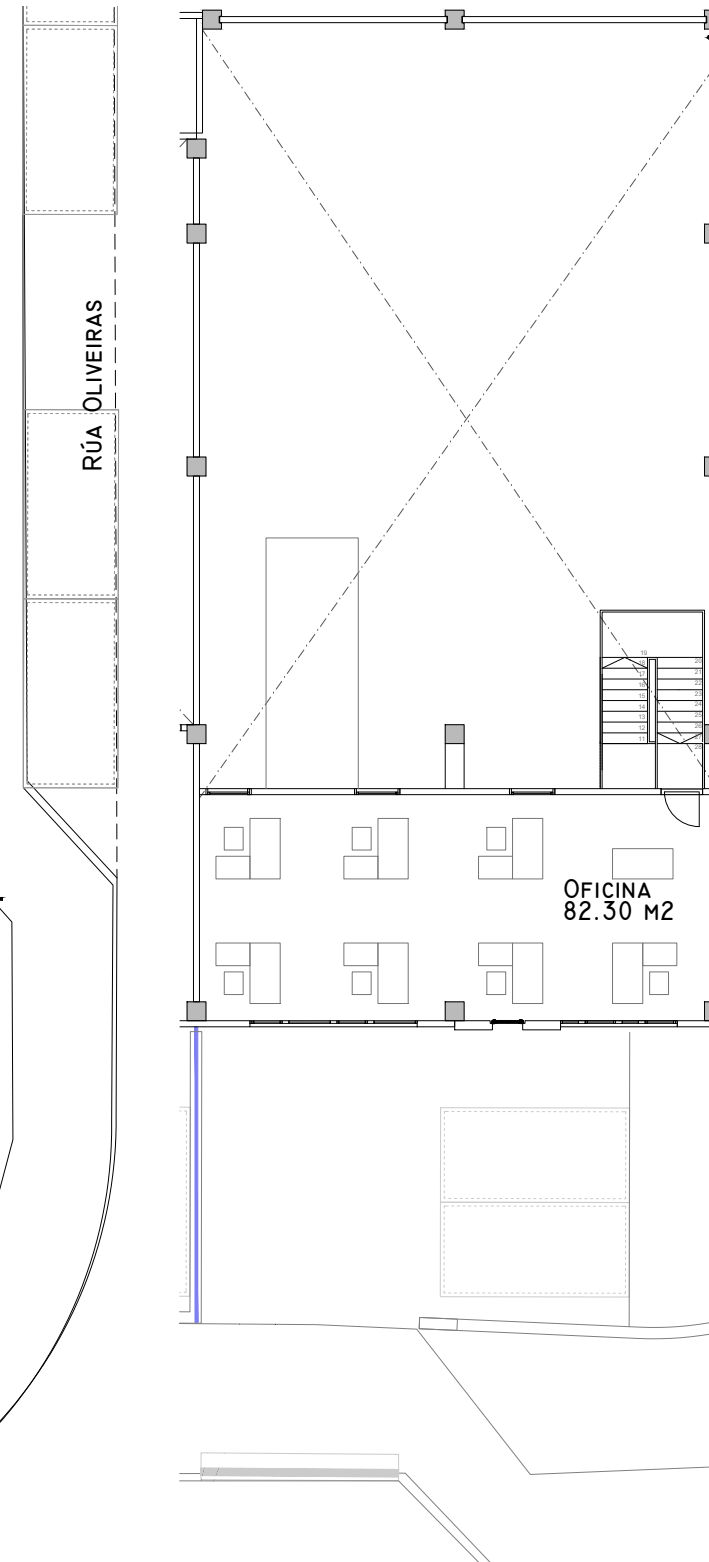
TOTAL PARCELA 3	798,15	840,33
-----------------	--------	--------



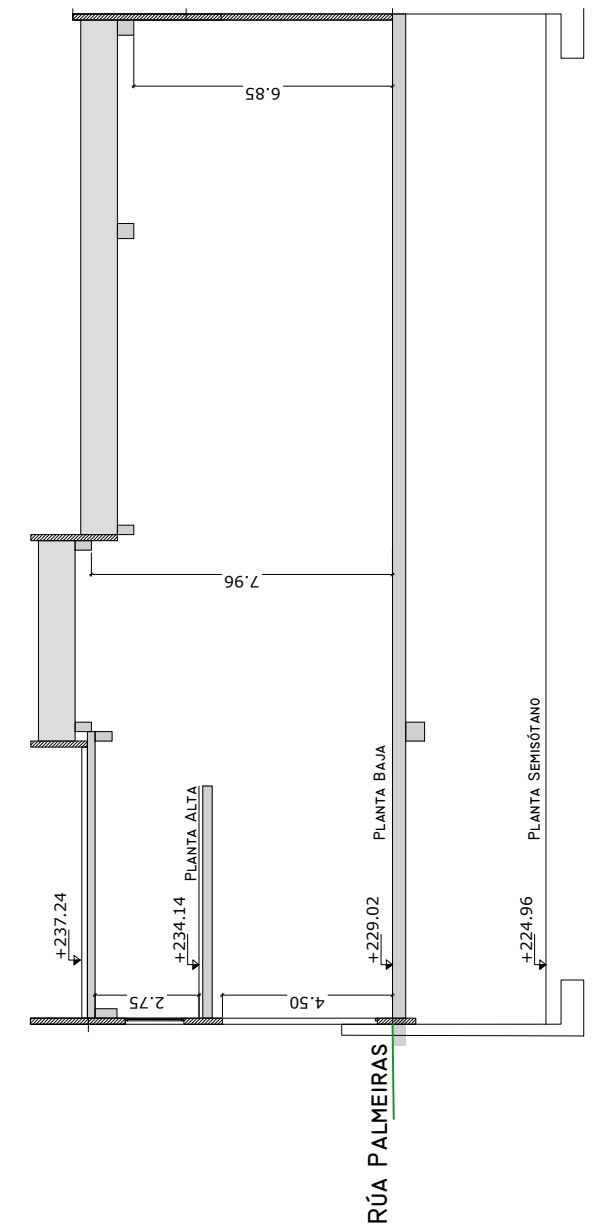
PLANTA SEMISÓTANO - E. 1:200



PLANTA BAJA - E. 1:200



PLANTA ALTA - E. 1:200



SECCIÓN A - E. 1:200