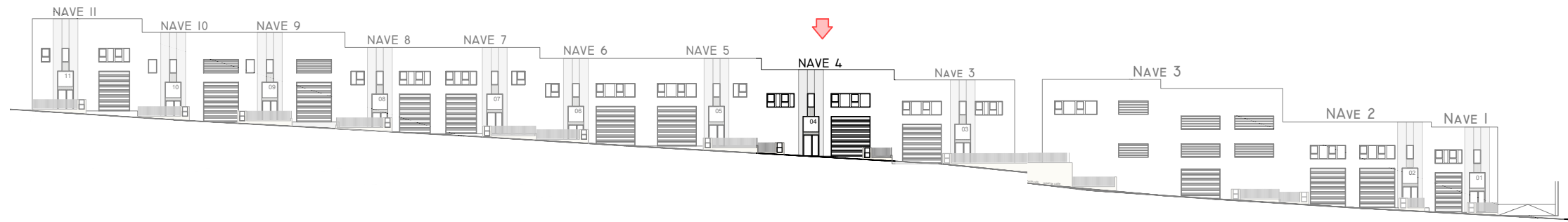




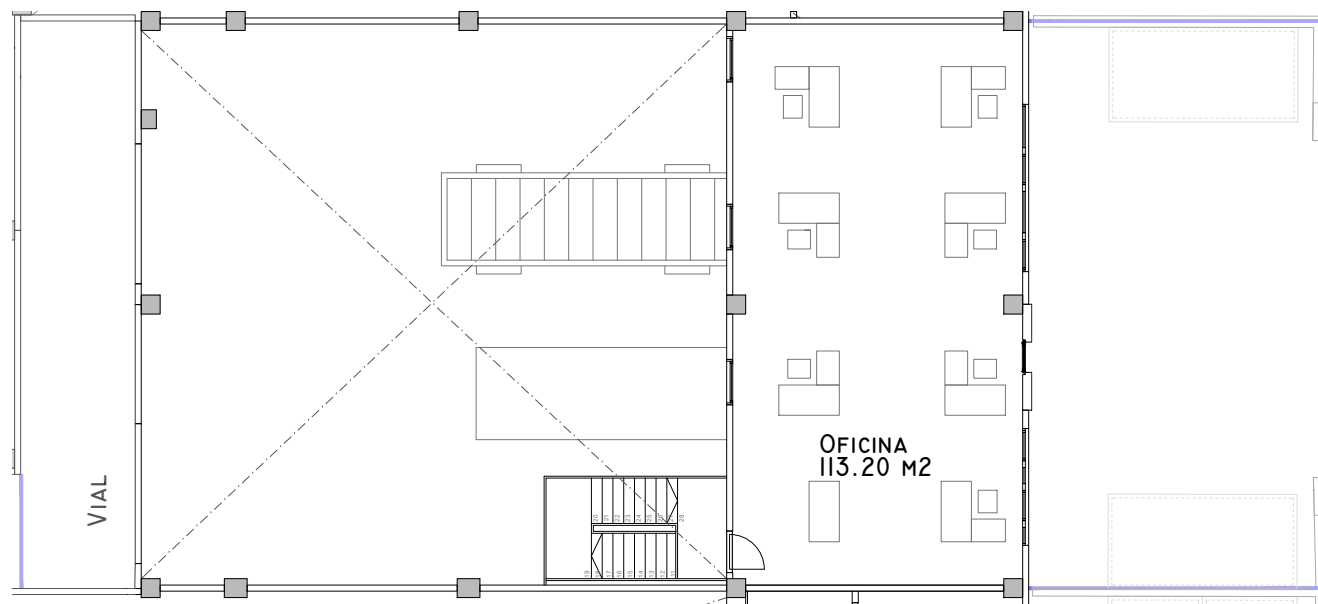
NAVE 4



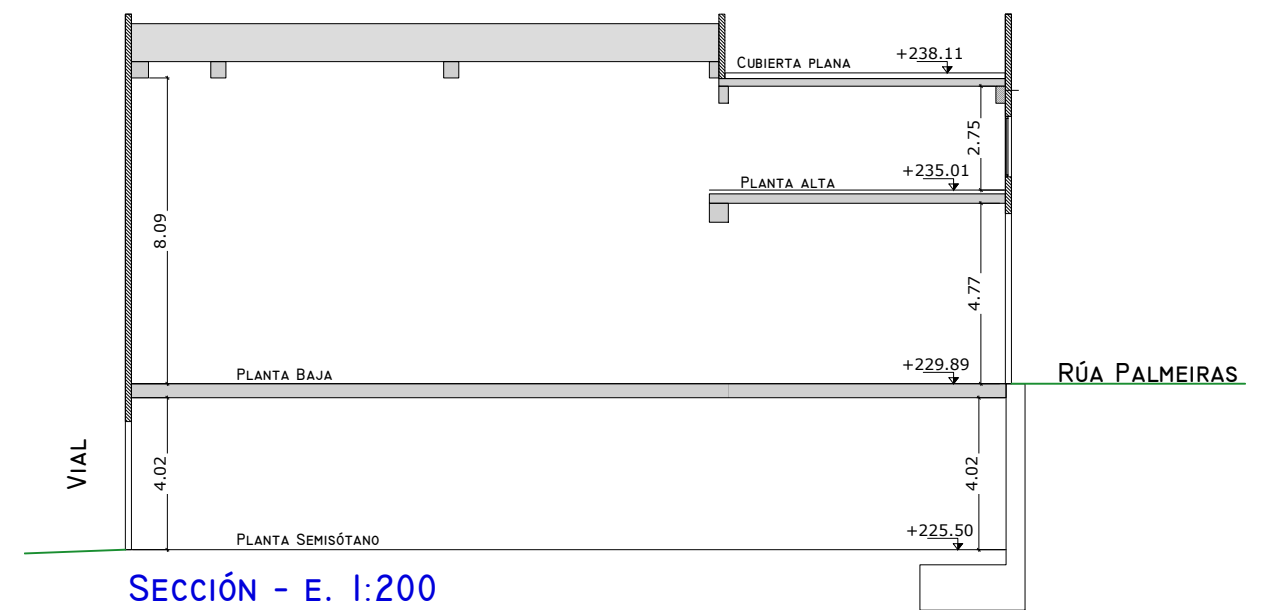
ALZADO A RÚA PALMEIRAS - E. 1:600

ALZADO A RÚA OLIVEIRAS - E. 1:600

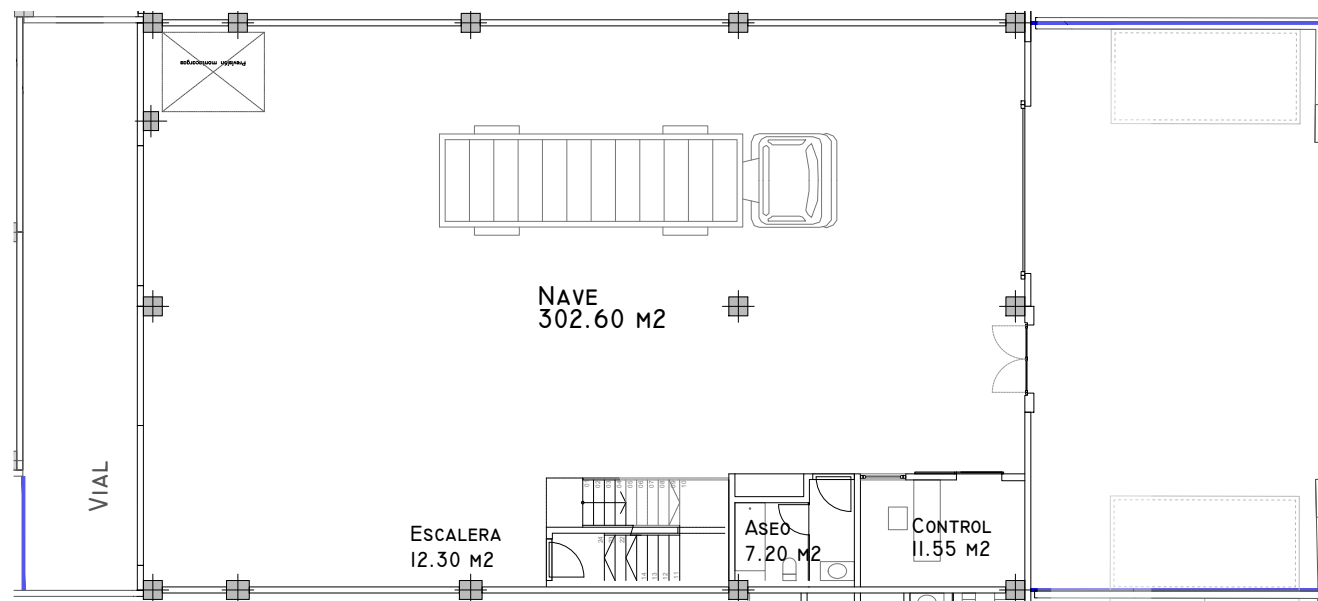
PARCELA 4		
ESTANCIA	S.UTIL (M2)	S.CONSTRUIDA (M2)
<b>SÓTANO</b>		
APARCAMIENTO	322,20	
ESCALERA	13,30	
<b>TOTAL SÓTANO</b>	<b>335,50</b>	<b>354,75</b>
<b>P. BAJA</b>		
CONTROL	11,55	
ASEO	7,20	
ESCALERA	12,30	
NAVE	302,60	
<b>TOTAL P. BAJA</b>	<b>333,65</b>	<b>354,75</b>
<b>ENTREPLANTA</b>		
OFICINA	113,20	
<b>TOTAL ENTREPLANTA</b>	<b>113,20</b>	<b>119,83</b>
<b>TOTAL PARCELA 4</b>	<b>782,35</b>	<b>829,33</b>



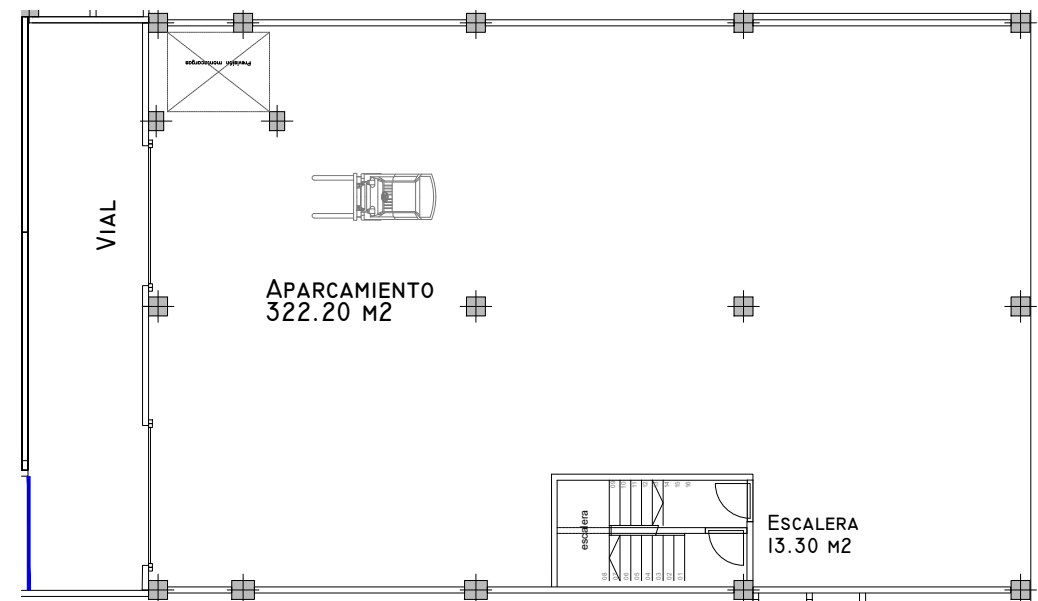
PLANTA ALTA - E. 1:200



SECCIÓN - E. 1:200



PLANTA BAJA - E. 1:200



PLANTA SEMISÓTANO - E. 1:200