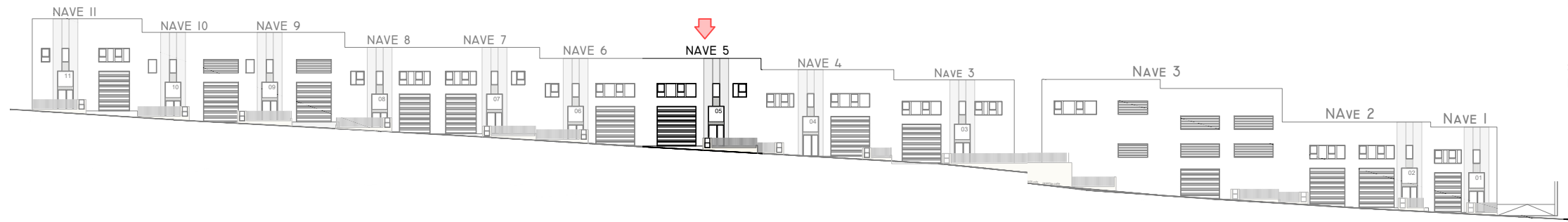


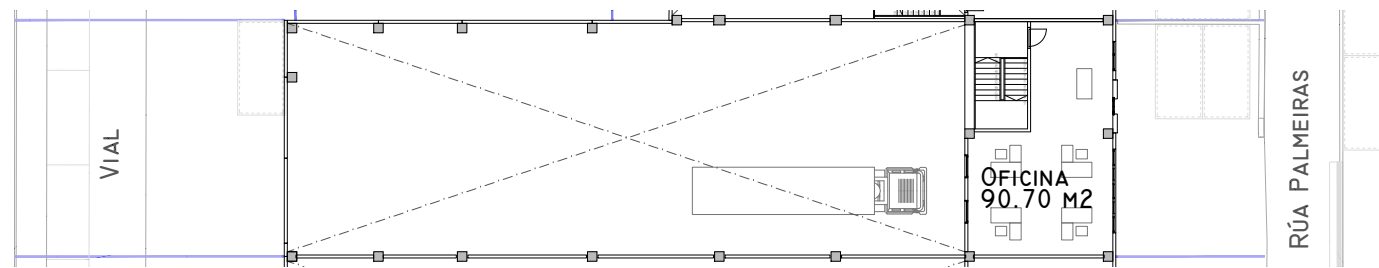
NAVE 5



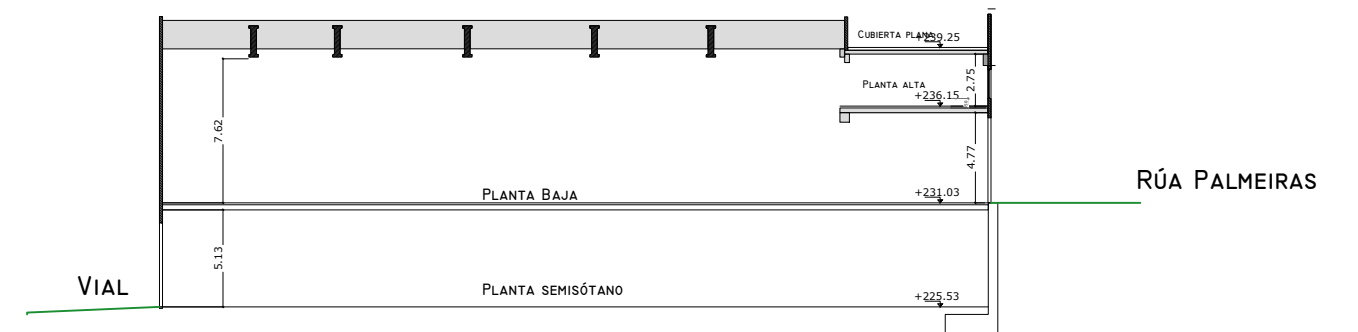
ALZADO A RÚA PALMEIRAS - E. 1:600

ALZADO A RÚA OLIVEIRAS - E. 1:600

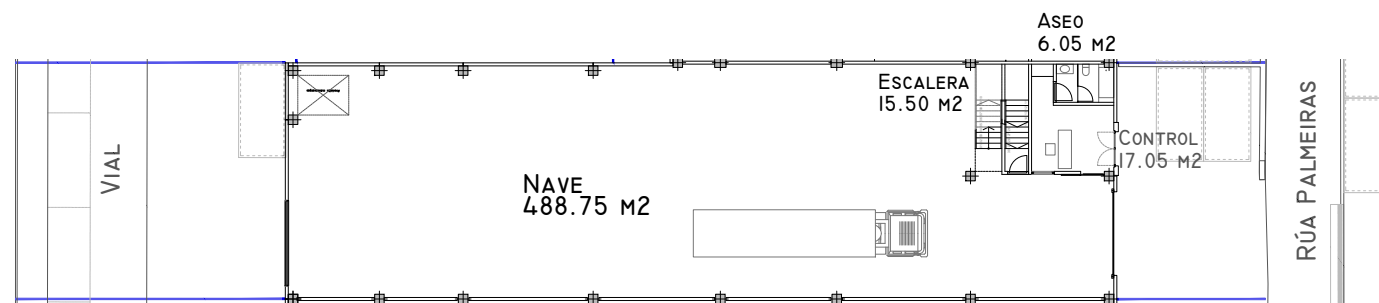
PARCELA 5		
ESTANCIA	S.UTIL (M2)	S.CONSTRUIDA (M2)
SÓTANO		
APARCAMIENTO	513,70	
ESCALERA	14,60	
TOTAL SÓTANO	528,30	550,00
P. BAJA		
CONTROL	17,65	
ASEO	6,05	
ESCALERA	15,50	
NAVE	488,75	
TOTAL P. BAJA	527,95	550,00
ENTREPLANTA		
OFICINA	90,70	
TOTAL ENTREPLANTA	90,70	97,00
TOTAL PARCELA 5	1.146,95	1.197,00



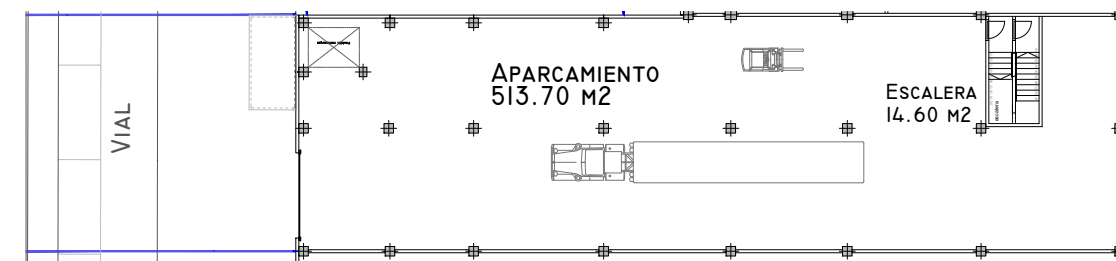
PLANTA ALTA - E. 1:400



SECCIÓN - E. 1:400



PLANTA BAJA - E. 1:400



PLANTA SEMISÓTANO - E. 1:400