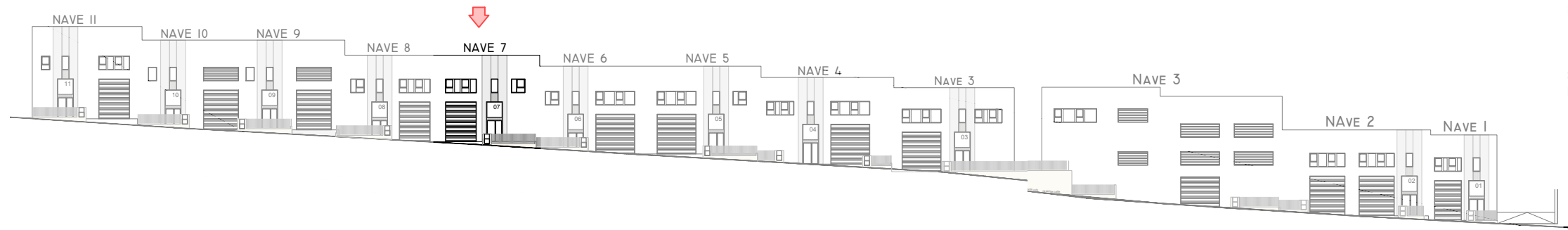


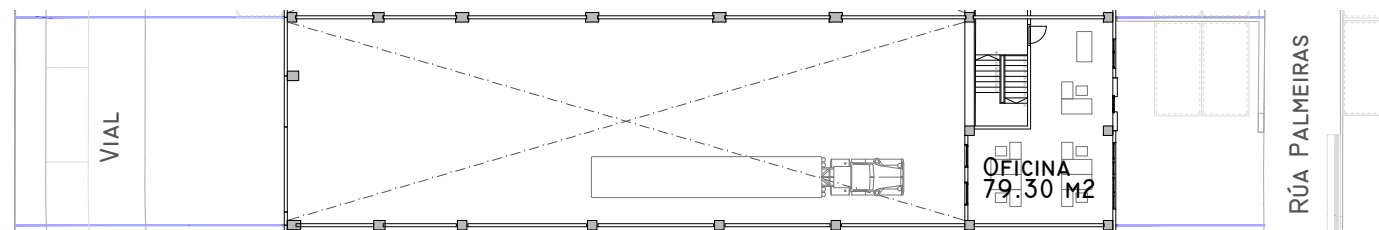
NAVE 7



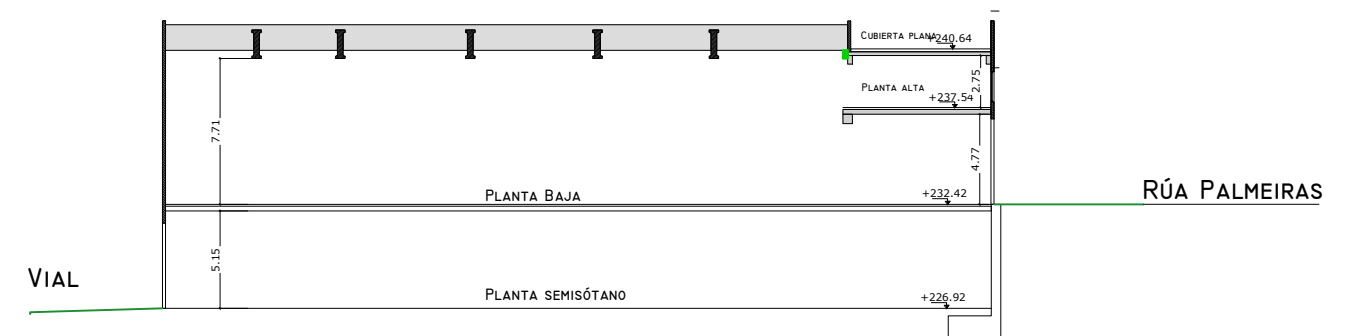
ALZADO A RÚA PALMEIRAS - E. 1:600

ALZADO A RÚA OLIVEIRAS - E. 1:600

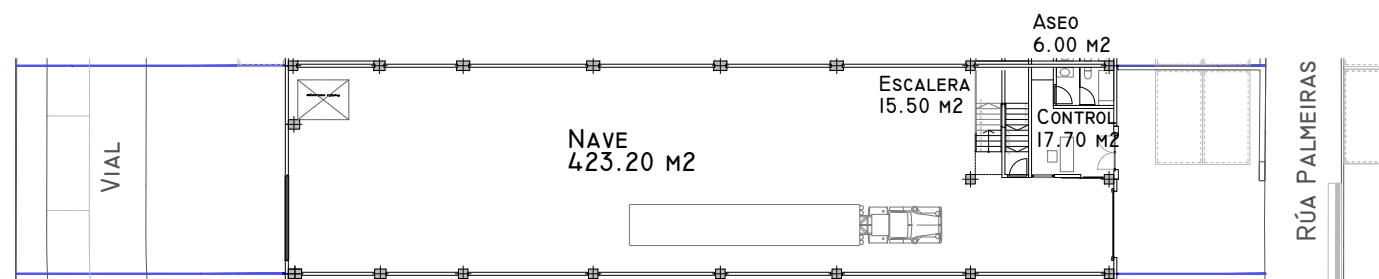
PARCELA 7		
ESTANCIA	S.UTIL (M2)	S.CONSTRUIDA (M2)
SÓTANO		
APARCAMIENTO	447,45	
ESCALERA	14,60	
TOTAL SÓTANO	462,05	484,00
P. BAJA		
CONTROL	17,70	
ASEO	6,00	
ESCALERA	15,50	
NAVE	423,20	
TOTAL P. BAJA	462,40	484,00
ENTREPLANTA		
OFICINA	79,30	
TOTAL ENTREPLANTA	79,30	85,02
TOTAL PARCELA 7	1.003,75	1.053,02



PLANTA ALTA - E. 1:400



SECCIÓN - E. 1:400



PLANTA BAJA - E. 1:400



PLANTA SEMISÓTANO - E. 1:400